

Hipster Bag



The RBD Designers



Back



Front

Hipster Bag

Measurements include ¼" seam allowance.

Sew with right sides together unless otherwise stated.

Please check our website www.rileyblakedesigns.com for any revisions before starting this project. This pattern requires a basic knowledge of sewing technique and terminology.

FABRIC REQUIREMENTS

¼ yard (25 cm) Fabric 1 for Front Top
¼ yard (25 cm) Fabric 2 for Front Bottom
¼ yard (25 cm) Fabric 3 for Back
¼ yard (25 cm) Fabric 4 for Back Pocket
⅓ yard (35 cm) Fabric 5 for Strap and Lining
¼ yard (25 cm) Fusible Fleece
¼ yard (25 cm) Midweight Fusible Interfacing
12" zipper

CUTTING REQUIREMENTS

Front Top 9" x 6"

Front Bottom 9" x 16"

Back 9" x 11"

Back Pocket 9" x 14"

Lining 9" x 11"

Strap 2½" x WOF

Fusible Fleece 9" x 11"

Midweight Fusible Interfacing 9" x 11"

SEWING INSTRUCTIONS

Back Pocket

Fold the short ends with wrong sides together and topstitch across the folded edge.

Lining

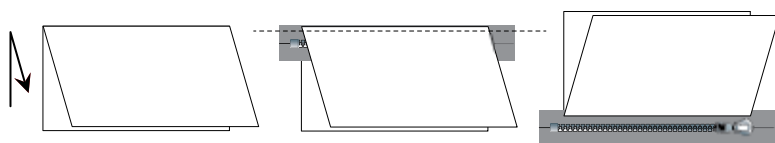
Iron the midweight fusible interfacing to the wrong side of the lining piece.

Back

Iron the fusible fleece to the wrong side of the back piece.

Front Top

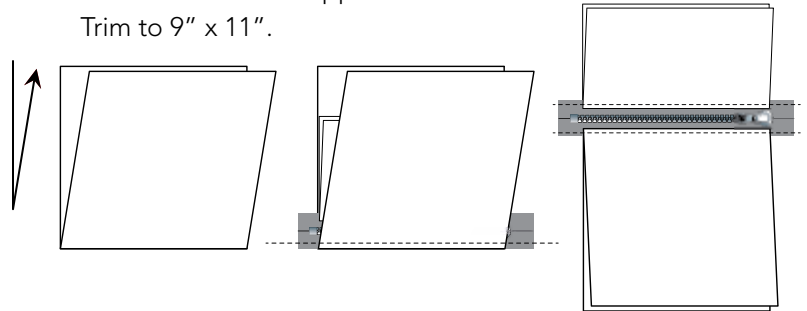
Fold right sides together along the length of the fabric. Press. Slide the zipper up into the fold with the pull tab to the left. Stitch across the fold to enclose the zipper. Press fabric away from the zipper and topstitch.



Front Bottom

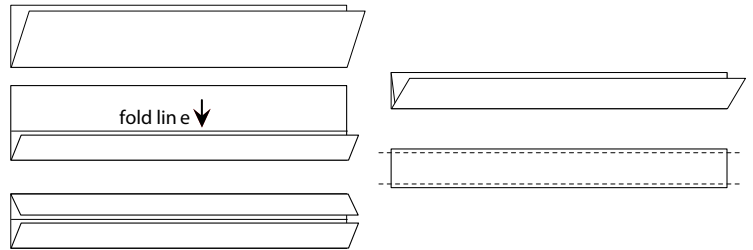
Fold right sides together. Press. Slide the opposite side of the zipper up into the fold. Stitch across the zipper. Press fabric away from the zipper and topstitch. Slide the zipper pull towards the center of the front and stitch ⅛" away from each side. Cut the extra zipper off of the ends.

Trim to 9" x 11".



Straps

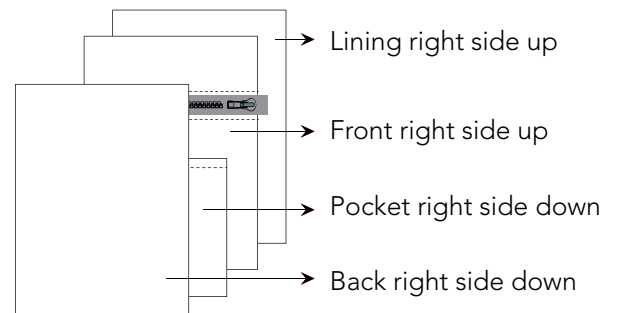
Fold the strap in half wrong sides together along the length of the fabric. Press. Open up and fold the raw edges in to the pressed line created. Topstitch ⅛" from each long edge to create the strap.



Construction

On the right side of the front piece place a pin 1" in from the top on each side. Place a strap end centered over each of these pins. Baste the strap ends in place.

Lay the items in this order: the bag lining right side up, the bag front right side up, the pocket right side down and the bag back right side down, sew around three sides leaving the pocket bottom edge open.



Turn the bag right side out through the bottom opening with the pocket towards the front of the bag. Push out corners and press. Stitch across the bottom of the bag, and then turn the pocket to the back of the bag to finish. Press.