



## Baby Layette Gown

Size 0 to 3 months

by Debbie Proctor

### Materials:

\*1 1/2 yards knit fabric (makes 2 gowns)

\*1/4 yard knit for contrast self ribbing (optional)

\*16" of 1/4" elastic

### Before you start:

Use a 3/8" seam allowance unless otherwise noted.

Use a .5 zig zag stitch unless otherwise noted.

### Instructions:

Print out your pattern pieces, print 2 sleeves, 2 gown tops, 4 gown centers and 4 gown bottoms. Cut out each piece. Match corresponding marks (I, II, III) and tape together to make a full front gown and full back gown.

Use the pattern pieces to cut:

\*1 Front

\*1 Back

\*2 Sleeves

\*1-1 1/2" X 11" front self- ribbing across the stretch of the fabric

\*1-1 1/2" X 9 1/2" back self- ribbing across the stretch of the fabric



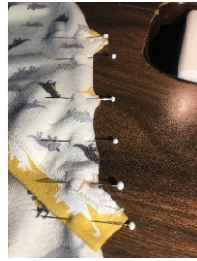
Fold front and back self ribbing pieces in half lengthwise and press.

Pin, right sides together, matching center front of ribbing to center front of gown neckline. Pin each side leaving 1/2" on each side (this will help when putting sleeve on later).



Stitch ribbing with 3/8" seam. Finish seam with serger or zig zag stitch. Press ribbing UP and seam allowance DOWN. Topstitch with straight stitch 1/8" from seam along gown neckline, stitching the seam allowance down on the inside. Repeat for gown back.





To make shoulder seams, overlap back gown piece on top of front piece, right sides of fabric FACE UP, matching notches at center of shoulder. Pin edges of ribbing along edge making sure ribbing is in seam allowance. Pin baste in place.



Match sleeve notch to shoulder notch, pin each side of sleeve to gown making sure back of sleeve is on the back of gown. Stitch sleeve, stretching and easing to fit into armhole opening. Repeat for other sleeve.



Hem bottom edges of sleeves folding up and stitching with a straight stitch  $\frac{1}{4}$ " from fold.

Fold hand cover up to right side of sleeve, matching side seams, pin. Fold sleeve in half matching dart on one side and matching underarm seam on the other, pin. The hand cover will be longer than the other side of the sleeve. Stitch dart from fold to edge with  $\frac{3}{8}$ " seam. Repeat for other sleeve.



Pin gown front to back with right sides together. Stitch side seam of gown and sleeve. Backstitch at each end.



Press 1" casing for hem. Stitch with a straight stitch close to raw edge, leave 1" opening.

Thread elastic in casing. Stitch elastic together and finish casing opening.